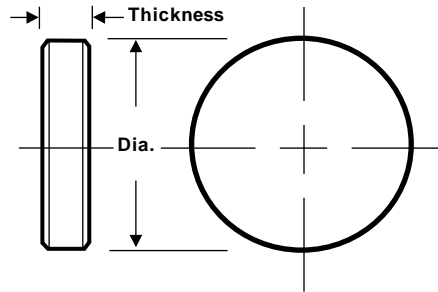


Flat and Parallel Substrates



Specifications:

Material Schlieren grade fused silica
 Parallelism Less than 2.0 arc seconds
 Surface Flatness 1/10 at 632.8 nm
 Transmitted Wavefront 1/10
 Surface Quality 10/5
 Diameter Tolerance +.000", -.005"
 Thickness Tolerance ± .003"
 Clear Aperture Central 90% of diameter



Diameter	Thickness (mm)								
	.05	.10	.15	.20	.25	.30	.50	.75	1.0
12.7 mm (.500")	—	—	—	FP50-008	FP50-010	FP50-012	FP50-020	FP50-030	FP50-039
15.0 mm (.591")	—	—	—	FP59-008	FP59-010	FP59-012	FP59-020	FP59-030	FP59-039
20.0 mm (.787")	FP78-002	FP78-004	FP78-006	FP78-008	FP78-010	FP78-012	FP78-020	FP78-030	FP78-039
25.4 mm (1.00")	FP10-002	FP10-004	FP10-006	FP10-008	FP10-010	FP10-012	FP10-020	FP10-030	FP10-039
30.0 mm (1.18")	FP11-002	FP11-004	FP11-006	FP11-008	FP11-010	FP11-012	FP11-020	FP11-030	FP11-039
38.1 mm (1.50")	FP15-002	FP15-004	FP15-006	FP15-008	FP15-010	FP15-012	FP15-020	FP15-030	FP15-039

Diameter	Thickness (mm)								
	1.5	2.0	2.5	3.0	4.0	5.0	7.5	10	15
12.7 mm (.500")	FP50-059	FP50-079	FP50-098	FP50-118	FP50-157	FP50-197	FP50-295	—	—
15.0 mm (.591")	FP59-059	FP59-079	FP59-098	FP59-118	FP59-157	FP59-197	FP59-295	FP59-394	—
20.0 mm (.787")	FP78-059	FP78-079	FP78-098	FP78-118	FP78-157	FP78-197	FP78-295	FP78-394	FP78-591
25.4 mm (1.00")	FP10-059	FP10-079	FP10-098	FP10-118	FP10-157	FP10-197	FP10-295	FP10-394	FP10-591
30.0 mm (1.18")	FP11-059	FP11-079	FP11-098	FP11-118	FP11-157	FP11-197	FP11-295	FP11-394	FP11-591
38.1 mm (1.50")	FP15-059	FP15-079	FP15-098	FP15-118	FP15-157	FP15-197	FP15-295	FP15-394	FP15-591

Diameter	Thickness (Inches)			
	.125"	.250"	.375"	.500"
.500"	FP50-125	FP50-250	FP50-375	FP50-500
.750"	FP75-125	FP75-250	FP75-375	FP75-500
1.00"	FP10-125	FP10-250	FP10-375	FP10-500
1.25"	FP12-125	FP12-250	FP12-375	FP12-500
1.50"	FP15-125	FP15-250	FP15-375	FP15-500
2.00"	FP20-125	FP20-250	FP20-375	FP20-500