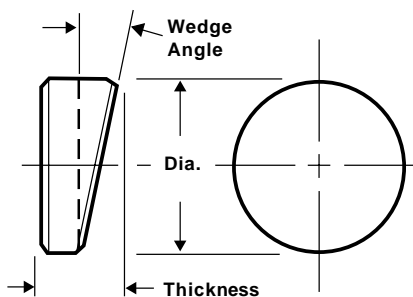


# Flat Mirror Substrates (5, 30 Minute Wedge)



## Specifications:

Material . . . . . Schlieren grade fused silica  
 Surface Flatness . . . . . 1/10 @ 632.8nm  
 Surface Quality . . . . . 10/5 (Both Sides)  
 Diameter Tolerance . . . . . +.000", -.005"  
 Thickness Tolerance . . . . . ± .010"  
 Clear Aperture . . . . . Central 90% of diameter



Flat Mirror Substrates 5 min Wedge

Diameter	Thickness			
	.250"	.375"	.393"	.500"
9.5 mm (.375")	FM5-37-250	FM5-37-375	—	—
12.7 mm (.500")	FM5-50-250	FM5-50-375	—	—
15.0 mm (.591")	FM5-59-250	FM5-59-375	FM5-59-394	FM5-59-500
19.0 mm (.750")	FM5-75-250	FM5-75-375	FM5-75-394	FM5-75-500
25.4 mm (1.00")	FM5-10-250	FM5-10-375	FM5-10-394	FM5-10-500
38.1 mm (1.50")	FM5-15-250	FM5-15-375	FM5-15-394	FM5-15-500
50.8 mm (2.00")	FM5-20-250	FM5-20-375	FM5-20-394	FM5-20-500
76.2 mm (3.00")	—	FM5-30-375	FM5-30-394	FM5-30-500
101.6 mm (4.00")	—	FM5-40-375	FM5-40-394	FM5-40-500
127.1 mm (5.00")	—	FM5-50-375	FM5-50-394	FM5-50-500

Flat Mirror Substrates 30min wedge

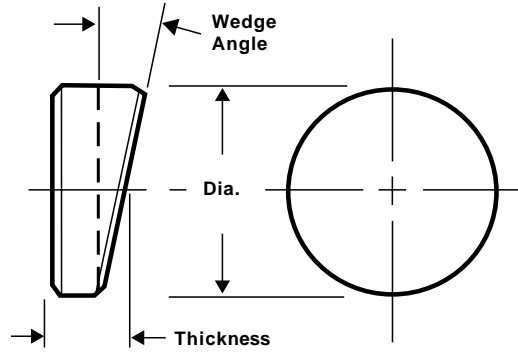
Diameter	Thickness			
	.250"	.375"	.393"	.500"
9.5 mm (.375")	FM3-37-250	FM3-37-375	FM3-37-394	FM3-37-500
12.7 mm (.500")	FM3-50-250	FM3-50-375	FM3-50-394	FM3-50-500
15.0 mm (.591")	FM3-59-250	FM3-59-375	FM3-59-394	FM3-59-500
19.0 mm (.750")	FM3-75-250	FM3-75-375	FM3-75-394	FM3-75-500
25.4 mm (1.00")	FM3-10-250	FM3-10-375	FM3-10-394	FM3-10-500
38.1 mm (1.50")	FM3-15-250	FM3-15-375	FM3-15-394	FM3-15-500
50.8 mm (2.00")	FM3-20-250	FM3-20-375	FM3-20-394	FM3-20-500
76.2 mm (3.00")	—	FM3-30-375	FM3-30-394	FM3-30-500
101.6 mm (4.00")	—	FM3-40-375	FM3-40-394	FM3-40-500
127.1 mm (5.00")	—	FM3-50-375	FM3-50-394	FM3-50-500

# Flat Mirror Substrates Large Wedge 1°, 2°



**Specifications:**

Material ..... Schlieren grade fused silica  
 Surface Flatness ..... 1/10 @ 632.8nm  
 Surface Quality ..... 10/5 (Both Sides)  
 Diameter Tolerance ..... +.000", -.005"  
 Thickness Tolerance ..... ± .010"  
 Thickness ..... Measured from center  
 Clear Aperture ..... Central 90% of diameter



Flat Mirror Substrates 1 deg wedge.

Diameter	Center Thickness		
	.250"	.375"	.500"
12.7 mm (.500")	FM1-50-250	FM1-50-375	FM1-50-500
15.0 mm (.591")	FM1-59-250	FM1-59-375	FM1-59-500
20.0 mm (.787")	FM1-78-250	FM1-78-375	FM1-78-500
25.4 mm (1.00")	FM1-10-250	FM1-10-375	FM1-10-500
38.1 mm (1.50")	FM1-15-250	FM1-15-375	FM1-15-500
50.8 mm (2.00")	—	FM1-20-375	FM1-20-500

Flat Mirror Substrates 2 deg wedge.

Diameter	Center Thickness		
	.250"	.375"	.500"
12.7 mm (.500")	FM2-50-250	FM2-50-375	FM2-50-500
15.0 mm (.591")	FM2-59-250	FM2-59-375	FM2-59-500
20.0 mm (.787")	FM2-78-250	FM2-78-375	FM2-78-500
25.4 mm (1.00")	FM2-10-250	FM2-10-375	FM2-10-500
38.1 mm (1.50")	FM2-15-250	FM2-15-375	FM2-15-500
50.8 mm (2.00")	—	FM2-20-375	FM2-20-500